



Cowes Enterprise College

The Project

What?
Cowes
Enterprise
College

Where?
Crossfield
Avenue

When?
Start January
2011

Who?



Charles O'Neill
Site Manager
T: 07984 020430
E: clo@pihl-uk.com



Jeremy Barnes
Site Manager
T: 07534 909524
E: jrb@pihl-uk.com

Dear Residents,

Welcome to the fifth edition of the Pihl monthly newsletter. Once again the weather throughout May has been fantastic with very little rain and lots of sunshine. Make hay while the sun shines is a well said verse in the farming world and this very much applies to the construction industry too.

The main building is now starting to take shape with the erection of the pre cast panels, this will grow now on a daily basis for the next few months.

The attenuation tank under the sports pitches is complete (it has now been buried) and the levelling of the sports pitches will continue in preparation for the sowing of seed in the planting seasons. Work on the energy centre to the eastern side of the site will be starting in June. The old sports pavilion has been demolished and this is where the new early years learning centre will be built.

Walk The Wight

We are proud to state that Pihl entered a team to take part in Walk the Wight. It was an amazing day for all of us and we hope to raise a considerable sum of money for The Earl Mountbatten Hospice. Although we went through various aches and pains it was worthwhile for this good cause.

The Isle of Wight County Press took interview notes from Pihl and also team photos of us.



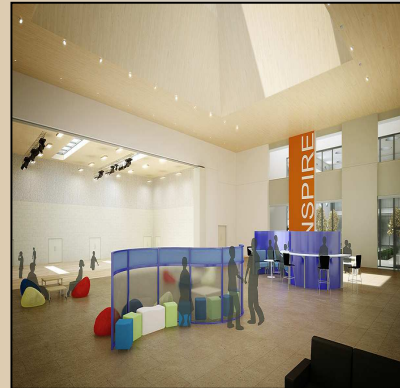
For any Queries, Issues, Suggestions/Ideas, Proposals, Events and Feedback please contact:

- Charles O'Neill Site Manager (contact details on the left) or
- Jeremy Barnes Site Manager (contact details on the left)

For more information about Pihl UK Ltd, please visit:
www.pihl-uk.com

Cowes Enterprise College

Images Of Proposed Construction



Ongoing Operations



Work being carried out for the preparation of main slab



Start of the pre cast panel erection

Operations To Be Carried Out In June

The following operations will be carried out during June 2011:

- Concrete to the ground floors
- Arrival and erection of pre cast concrete panels
- Foundations are ongoing during June
- Formation of playing field and sports track will continue
- Earthworks will continue
- Steel erection will continue during the month of June